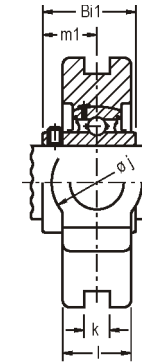
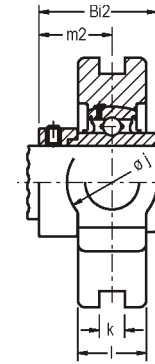


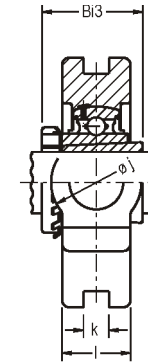
Ø eixo mm pol	Caixa	Dimensão nominal (mm)														
		o	g	p	q	s	b	k	e	a	w	l	j	h	t	Zc
25 1	T 305	16	12	62	36	26	65	12,0	80,0	89	122	26	36	76	2	80
30 1-3/16	T 306	18	14	70	41	28	74	16,0	90,0	100	137	28	41	85	2	85
1-1/4 35 1-7/16	T 307	20	15	84	50	30	84	16,0	100,0	111	145	32	45	89	3	95
1-1/2 40	T 308	22	17	83	50	32	89	18,0	112,0	124	162	34	59	100	3	105
1-11/16 1-3/4 45	T 309	24	18	90	55	34	97	18,0	125,0	138	178	38	55	110	3	110
1-7/8 1-15/16 50	T 310	27	20	98	61	37	106	20,0	140,0	151	191	40	61	117	3	120
2 55 2-3/16	T 311	29	21	105	66	39	115	22,0	150,0	163	207	44	66	127	4	125
2-1/4 2-5/16 60 2-7/16 65	T 312	31	23	113	71	41	123	22,0	160,0	178	220	46	71	135	4	135
2-1/2 65	T 313	32	25	119	70	43	134	26,0	170,0	190	242	50	80	146	4	140
2-11/16 70	T 314	36	25	130	85	46	140	26,0	180,0	202	257	52	90	155	4	140
2-15/16 75 3	T 315	36	25	148	85	52	150	26,0	192,0	226	262	61	90	160	4	150
80 3-3/16	T 316	42	28	150	98	53	160	30,0	204,0	230	282	60	102	174	4	155
85	T 317	42	30	152	98	53	170	32,0	214,0	240	298	64	102	183	5	170



UCT300

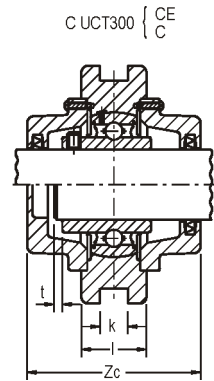
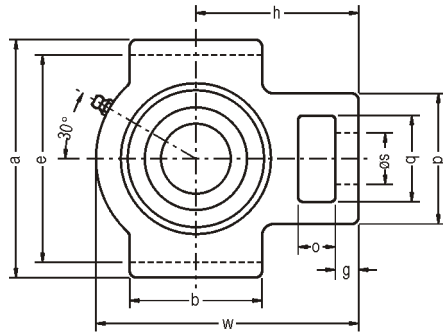


UGT300
GT300



UKT300

UCT3	CUCT3 C(E)	UGT3 GT3	UKT3	D	Rolamentos							
					UC 300		UG 300 / G 300		Ø Eixo		UK 300	
					Bi1	m1	Bi2	m2		Bucha	Bi3	
1,40	2,20	1,40	1,40	62,0	38,0	23,0	46,8	30,1	3/4 20	HE2305 H2305	35,0	
1,90	2,70	2,00	1,80	72,0	43,0	26,0	50,0	32,5	7/8 15/16 25 1	HS2306 HA2306 H2306 HE2306	38,0	
2,50	3,50	2,50	2,40	80,0	48,0	29,0	51,6	33,3	1-1/8 30 1-3/16	HS2307 H2307 HA2307	43,0	
3,10	4,20	3,20	2,90	90,0	52,0	33,0	57,1	37,3	1-1/4 1-5/16 1-3/8 35	HE2308 HA2308 HS2308 H2308	46,0	
4,00	5,30	4,20	3,90	100,0	57,0	35,0	58,7	38,9	1-7/16 1-1/2 40 1-5/8	HA2309 HE2309 H2309 HS2309	50,0	
5,00	6,70	5,20	4,70	110,0	61,0	39,0	66,6	42,0	1-11/16 1-3/4 45	HA2310 HE2310 H2310	55,0	
6,10	8,90	6,50	5,90	120,0	66,0	40,0	73,0	45,2	1-7/8 1-15/16 50 2	HS2311 HA2311 H2311 HE2311	59,0	
7,70	12,50	8,00	7,10	130,0	71,0	43,0	76,5	47,0	2-1/8 55	HS2312 H2312	62,0	
9,80	14,80	10,20	9,30	140,0	75,0	45,0	85,7	53,2	2-3/16 2-1/4 60 2-3/8	HA2313 HE2313 H2313 HS2313	65,0	
11,60	17,70	12,20	-	150,0	78,0	45,0	92,1	58,0	-	-	-	
12,60	20,00	13,60	12,00	160,0	82,0	50,0	100,0	62,7	2-1/2 65	HE2315 H2315	73,0	
15,90	26,50	17,10	14,90	170,0	86,0	52,0	106,4	65,9	2-3/4 70	HE2316 H2316	78,0	
18,90	28,00	19,90	17,40	180,0	96,0	56,0	109,5	67,5	75 3	H2317 HE2317	82,0	



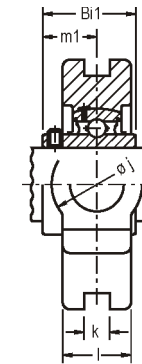
Ø eixo mm pol	Caixa	Dimensão nominal (mm)														
		o	g	p	q	s	b	k	e	a	w	l	j	h	t	Zc
3-7/16 90	T 318	46	30	160	106	57	175	32,0	228,0	255	312	66	110	192	5	170
95 100	T 319	46	31	169	106	57	180	35,0	240,0	270	327	72	110	197	5	180
100 3-15/16 4	T 320	48	32	175	115	59	200	35,0	260,0	290	345	75	115	210	5	190
105	T 321 ⁽¹⁾	48	32	175	115	59	200	35,0	260,0	290	345	75	115	210	5	195
110	T 322 ⁽²⁾	52	38	185	125	65	220	38,0	285,0	328	394	84	134	235	5	200
120	T 324	60	42	210	140	70	230	45,0	320,0	355	432	90	140	267	5	215
130	T 326 ⁽³⁾	65	45	220	150	75	240	50,0	350,0	385	465	100	150	285	6	225
140	T 328 ⁽⁴⁾	70	50	230	160	80	255	50,0	380,0	415	515	100	155	315	6	235

⁽¹⁾ - montado com rolamentos UC321D1 e UEL321D1W3 NTN em lugar de UC 300 e UG 300 / G 300, respectivamente.

⁽²⁾ - montado com rolamento UEL322D1W3 NTN em lugar de UG 300 / G 300.

⁽³⁾ - montado com rolamento UK326D1 NTN em lugar de UK 300.

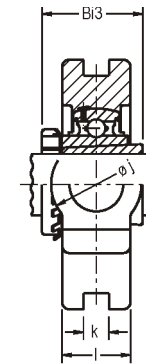
⁽⁴⁾ - montado com rolamentos UC328D1 e UK 328D1 NTN em lugar de UC 300 e UK 300, respectivamente.



UCT300



UGT300
GT300



UKT300

Peso (Kg)					D	Rolamentos					
UCT3	CUCT3 C(E)	UGT3 GT3	UKT3			UC 300		UG 300 / G 300		Ø Eixo	UK 300 Bucha
					Bi1	m1	Bi2	m2			
21,80	32,50	23,70	20,10	190,0	96,0	56,0	115,9	72,3	80	H2318	86,0
25,90	33,30	27,40	25,70	200,0	103,0	62,0	122,3	83,4	3-1/4 85	HE2319 H2319	90,0
30,80	46,50	32,70	30,50	215,0	108,0	66,0	128,6	78,6	3-1/2 90	HE2320 H2320	97,0
31,90	47,60	34,30	-	225,0	112,0	68,0	139,7	91,3	-	-	-
41,60	56,50	44,50	41,70	240,0	117,0	71,0	141,3	92,1	100 4	H2322 HE2322	105,0
54,60	74,30	-	54,10	260,0	126,0	75,0	-	-	110	H2324	112,0
69,00	92,00	-	69,00	280,0	135,0	81,0	-	-	115	H2326	121,0
84,00	111,00	-	84,00	300,0	145,0	86,0	-	-	125	H2328	131,0