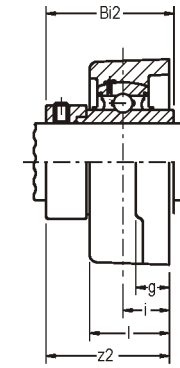
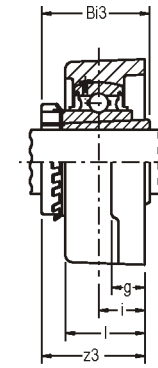


UCFL300



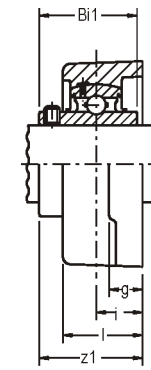
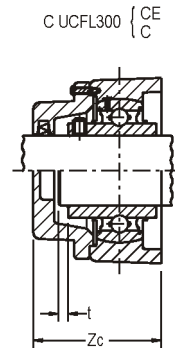
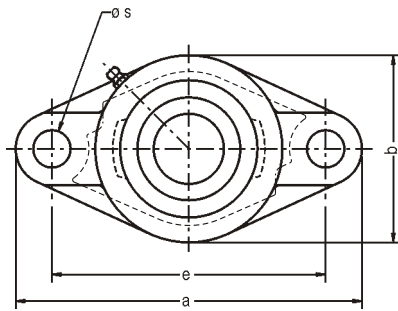
UGFL300
GFL300



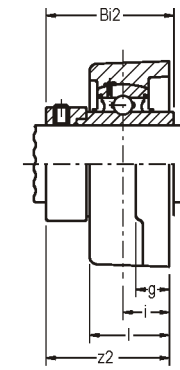
UKFL300

Ø eixo mm pol	Caixa	Dimensão nominal (mm)									Paraf.
		a	e	i	g	l	s	b	t	Zc	
25 1	FL 305	150	113,0	16,0	13	29	19,0	80	2	56	M16 5/8
30 1-3/16	FL 306	180	134,0	18,0	15	32	23,0	90	2	60	M20 3/4
1-1/4 35 1-7/16	FL 307	185	141,0	20,0	16	36	23,0	100	3	68	M20 3/4
1-1/2 40	FL 308	200	158,0	23,0	17	40	23,0	112	3	76	M20 3/4
1-11/16 1-3/4 45	FL 309	230	177,0	25,0	18	44	25,0	125	3	80	M22 7/8
1-7/8 1-15/16 50	FL 310	240	187,0	28,0	19	48	25,0	140	3	88	M22 7/8
2 55 2-3/16	FL 311	250	198,0	30,0	20	52	25,0	150	4	92	M22 7/8
2-1/4 2-5/16 60 2-7/16 65	FL 312	270	212,0	33,0	22	56	31,0	160	4	100	M27 1
2-1/2 65	FL 313	295	240,0	33,0	25	58	31,0	175	4	103	M27 1
2-11/16 70	FL 314	315	250,0	36,0	28	61	35,0	185	4	106	M30 1-1/8
2-15/16 75 3	FL 315	320	260,0	39,0	30	66	35,0	195	4	114	M30 1-1/8
80 3-3/16	FL 316	355	285,0	38,0	32	68	38,0	210	4	116	M33 1-1/4

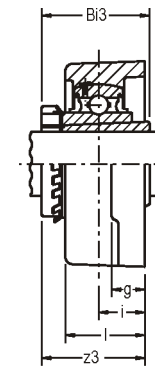
Peso (Kg)				D	Rolamentos								
UCFL3	CUCFL3 C(E)	UGFL3 GFL3	UKFL3		UC 300		UG 300 / G 300		UK 300				
				z1	Bi1	z2	Bi2	Ø Eixo	Bucha	z3	Bi3		
0,90	1,20	1,00	1,00	39	38,0	46	46,8	3/4 20	HE2305 H2305	37	35,0		
1,40	1,80	1,50	1,30	44	43,0	50	50,0	7/8 15/16 25 1	HS2306 HA2306 H2306 HE2306	41	38,0		
1,90	2,40	1,90	1,80	49	48,0	53	51,6	1-1/8 30 1-3/16	HS2307 H2307 HA2307	45	43,0		
2,30	2,90	2,40	2,10	56	52,0	60	57,1	1-1/4 1-5/16 1-3/8 35	HE2308 HA2308 HS2308 H2308	50	46,0		
3,50	4,10	3,70	3,40	60	57,0	64	58,7	1-7/16 1-1/2 40 1-5/8	HA2309 HE2309 H2309 HS2309	55	50,0		
4,40	5,30	4,60	4,10	67	61,0	70	66,6	1-11/16 1-3/4 45	HA2310 HE2310 H2310	60	55,0		
4,90	6,40	5,30	4,80	70	66,0	75	73,0	1-7/8 1-15/16 50 2	HS2311 HA2311 H2311 HE2311	63	59,0		
6,10	8,50	6,40	5,50	76	71,0	80	76,5	2-1/8 55	HS2312 H2312	69	62,0		
7,30	9,80	7,70	6,70	78	75,0	86	85,7	2-3/16 2-1/4 60 2-3/8	HA2313 HE2313 H2313 HS2313	71	65,0		
9,10	12,10	9,60	-	81	78,0	94	92,1	-	-	-	-		
10,20	13,90	11,30	9,70	89	82,0	102	100,0	2-1/2 65	HE2315 H2315	81	73,0		
12,30	17,60	13,40	11,30	90	86,0	104	106,4	2-3/4 70	HE2316 H2316	84	78,0		



UCFL300



UGFL300
GFL300



UKFL300

Ø eixo mm pol	Caixa	Dimensão nominal (mm)										Paraf.
		a	e	i	g	l	s	b	t	Zc		
85	FL 317	370	300,0	44,0	32	74	38,0	220	5	127	M33 1-1/4	
3-7/16 90	FL 318	385	315,0	44,0	36	76	38,0	235	5	129	M33 1-1/4	
95 100	FL 319	405	330,0	59,0	40	94	41,0	250	5	149	M36 1-3/8	
100 3-15/16 4	FL 320	440	360,0	59,0	40	94	44,0	270	5	154	M39 1-1/2	
105	FL 321 ⁽¹⁾	440	360,0	59,0	40	94	44,0	270	5	156	M39 1-1/2	
110	FL 322 ⁽²⁾	470	390,0	60,0	42	96	44,0	300	5	160	M39 1-1/2	
120	FL 324	520	430,0	65,0	48	110	47,0	330	5	172	M42 1-5/8	
130	FL 326 ⁽³⁾	550	460,0	65,0	50	115	47,0	360	6	178	M42 1-5/8	
140	FL 328 ⁽⁴⁾	600	500,0	75,0	60	125	51,0	400	6	192	M45 1-3/4	

⁽¹⁾ - montado com rolamentos UC321D1 e UEL321D1W3 NTN em lugar de UC 300 e UG 300 / G 300, respectivamente.

⁽²⁾ - montado com rolamento UEL322D1W3 NTN em lugar de UG 300 / G 300.

⁽³⁾ - montado com rolamento UK326D1 NTN em lugar de UK 300.

⁽⁴⁾ - montado com rolamentos UC328D1 e UK328D1 NTN em lugar de UC 300 e UK 300, respectivamente.

Peso (Kg)				D	Rolamentos							
UCFL3	CUCFL3 C(E)	UGFL3 GFL3	UKFL3		UC 300 z1	Bi1	UG 300 / G 300 z2	Bi2	Ø Eixo	Bucha	UK 300 z3	Bi3
15,00	19,50	16,00	13,50	180,0	100	96,0	111	109,5	75 3	H2317 HE2317	92	82,0
18,00	23,30	19,90	16,30	190,0	100	96,0	116	115,9	80	H2318	92	86,0
22,50	26,20	24,00	22,30	200,0	121	103,0	142	122,3	3-1/4 85	HE2319 H2319	111	90,0
26,10	34,00	28,00	25,80	215,0	125	108,0	137	128,6	3-1/2 90	HE2320 H2320	113	97,0
27,00	34,90	29,40	-	225,0	127	112,0	150	139,7	-	-	-	-
33,10	40,60	36,00	33,20	240,0	131	117,0	152	141,3	100 4	H2322 HE2322	121	105,0
44,90	54,80	-	44,40	260,0	140	126,0	-	-	110	H2324	130	112,0
58,00	64,00	-	58,30	280,0	146	135,0	-	-	115	H2326	133	121,0
81,00	97,50	-	81,40	300,0	161	145,0	-	-	125	H2328	146	131,0